

Signature - Script

LASER MARKING SYSTEMS

1991-1998



To Order Parts Contact: 1(866) 612-8619 / Fax: (407) 926-3551
or Visit Our Website: www.controllaser.com

TABLE OF CONTENTS

DESCRIPTION	PAGE
SECTION 1 - Control Cabinet	
Signature Control Cabinet (front view)	
Parts List.....	1
Figure 1-1.....	2
Signature Control Cabinet (rear view)	
Parts List.....	3
Figure 1-2.....	4
Script Control Cabinet	
Parts List.....	5
Figure 1-3.....	6
DI Water Cooling System (old model)	
Parts List.....	7
Figure 1-4a.....	8
DI Water Cooling System (new model)	
Parts List.....	9
Figure 1-4b.....	9
Water Pump Parts	
Parts List.....	10
Figure 1-5.....	10
Control Panel	
Parts List.....	11
Figure 1-6.....	11
Power Distribution	
Parts List.....	12
Figure 1-7.....	12
Computer Chassis (rear)	
Parts List.....	13
Figure 1-8.....	14

DESCRIPTION	PAGE
Computer Chassis (front)	
Parts List.....	13
Figure 1-9.....	14
SECTION 2 - Optical Head and Rail	
Laser Head Assembly (50 & 75 Watt)	
Parts List.....	15
Figure 2-1.....	16
Laser Head and Rail Assembly	
Parts List.....	17
Figure 2-2.....	17
SECTION 3 - Galvonometer Assembly	
Galvo / Scanner Assembly (old)	
Parts List.....	18
Figure 3-1.....	18
Galvo / Scanner Assembly (new)	
Parts List.....	19
Figure 3-2.....	19
Focal Input / Output Lens Assembly	
Parts List.....	20
Figure 3-3.....	20

TABLE OF CONTENTS

DESCRIPTION PAGE

SECTION 4 - Spares Kits and Test Equipment

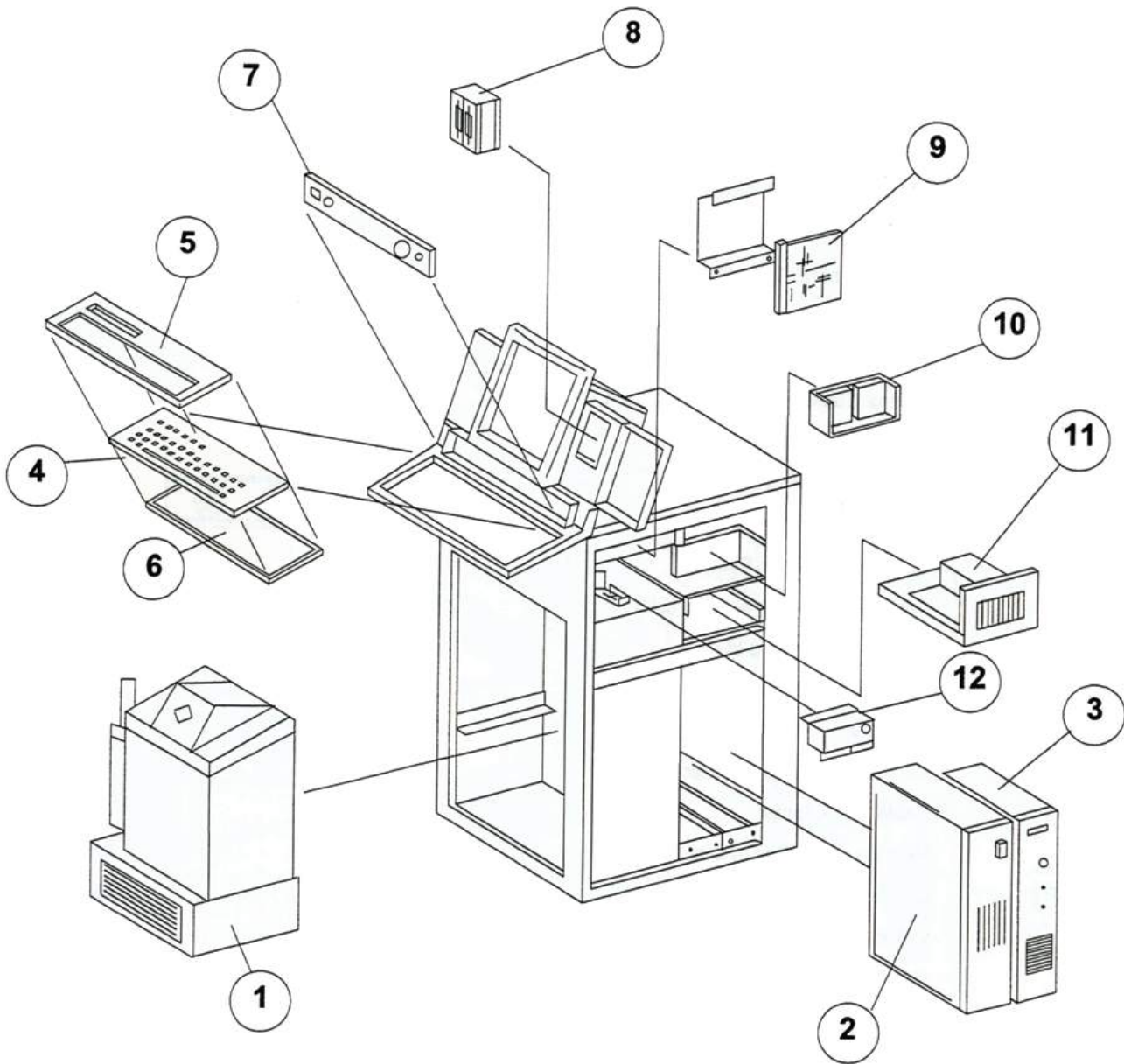
Spare Parts Kit
Parts List..... 21

Test Equipment
Arc Lamp Maintenance Kit..... 22
Optical Cleaning Kit..... 23
Master Maintenance Kit..... 24

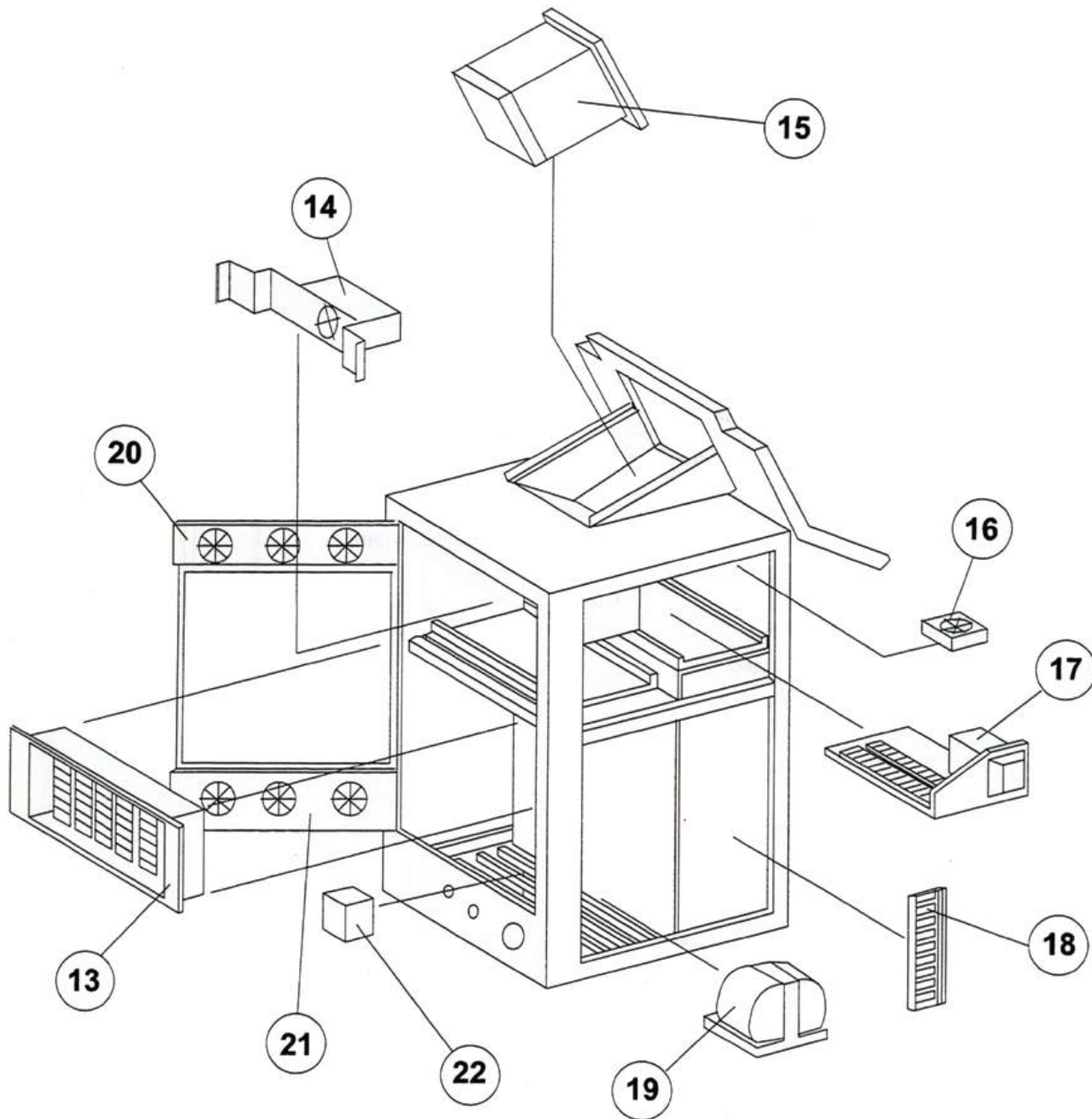
Signature - Script

SPARE PARTS CATALOG

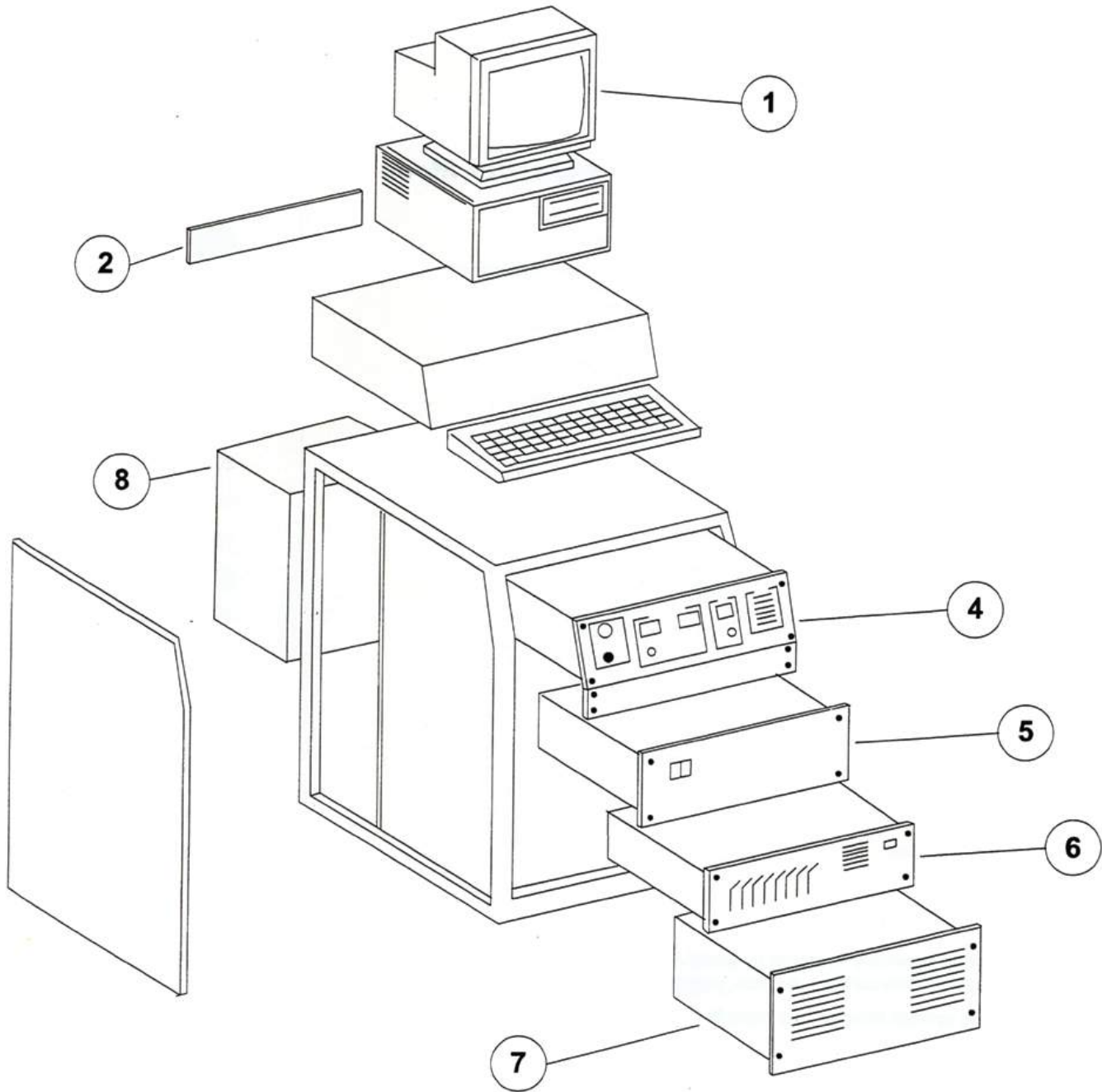
Signature Control Cabinet (front view)
Figure 1-1



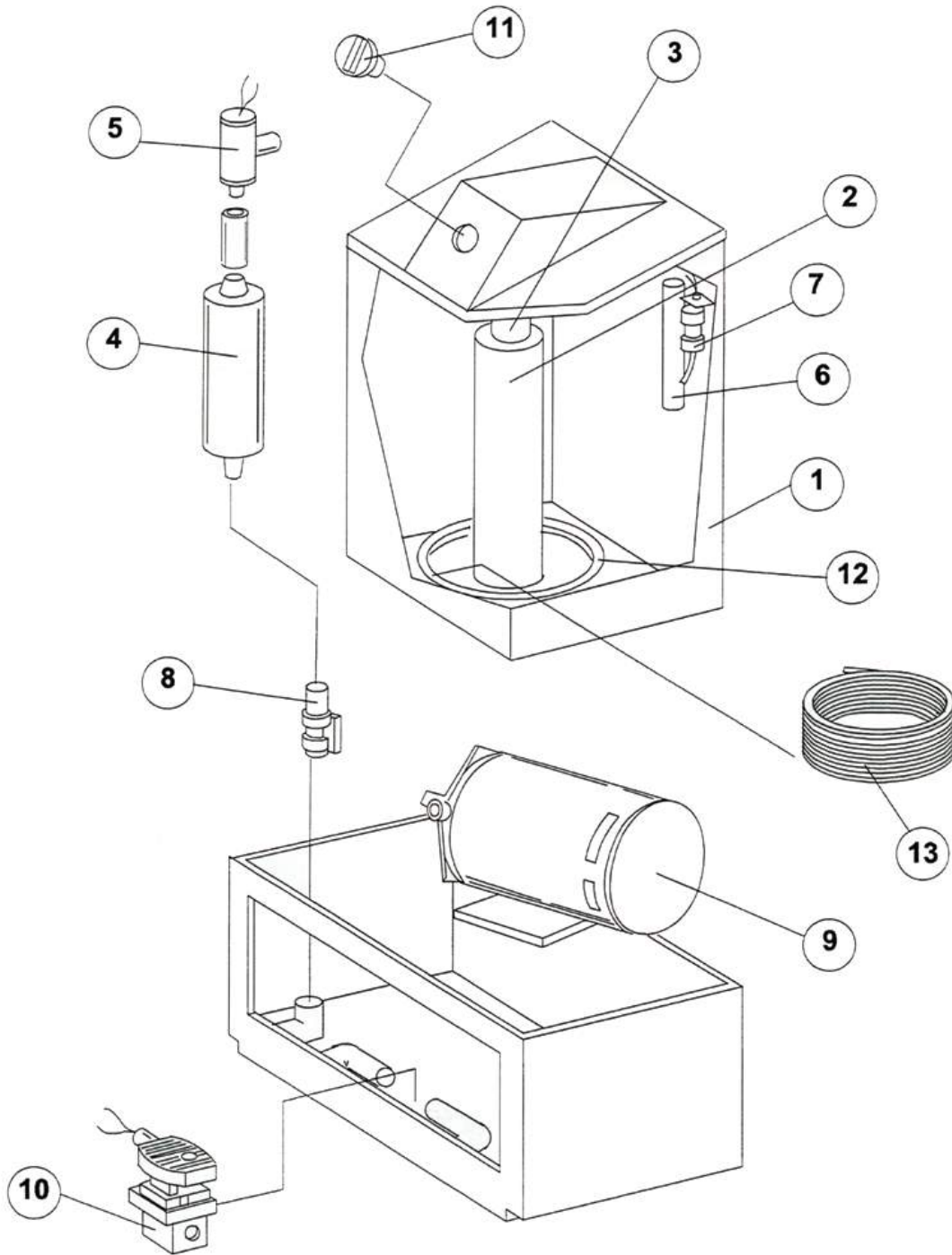
Signature Control Cabinet (rear view)
Figure 1-2



Script Control Cabinet (front view)
Figure 1-3

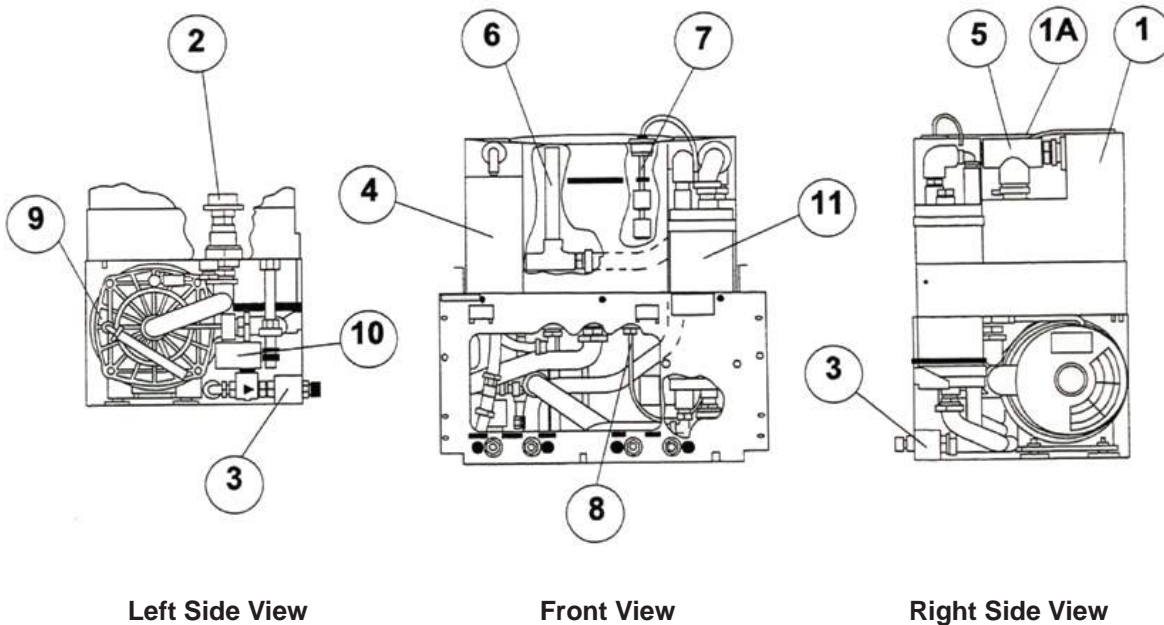


DI Water Cooling System (old model)
Figure 1-4a



DI Water Cooling System (new model)
 Parts List / Figure 1-4b (see below)

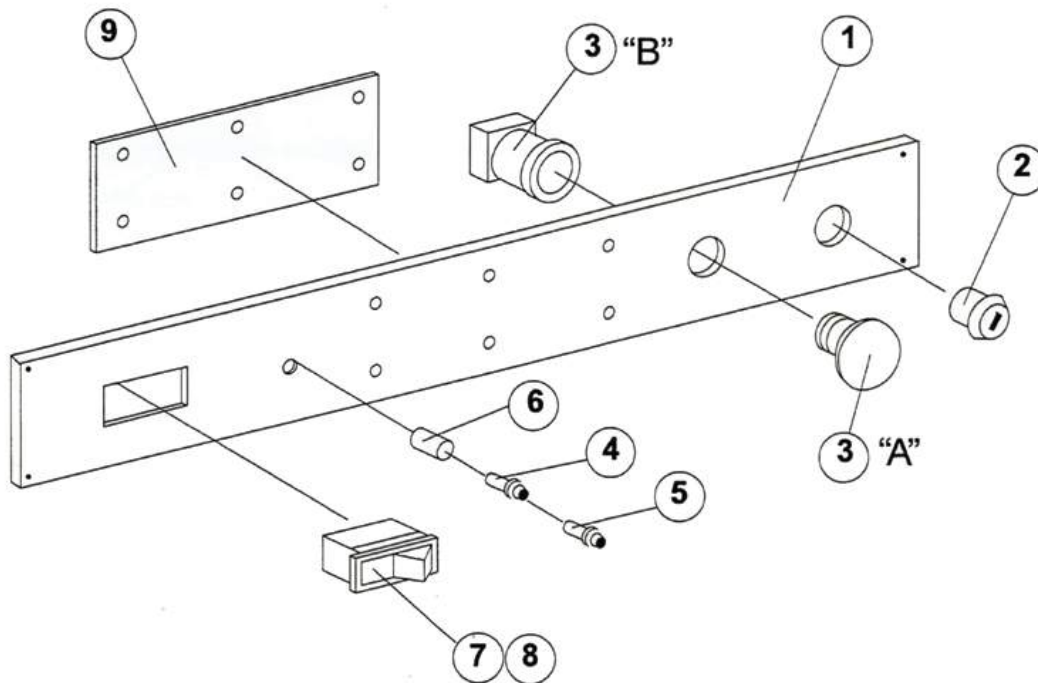
Item #	Description	Part #
1	Cooling System Tank	Not Available
1A	Tank Lid	Not Available
2	Particle Filter, 74 Micron Mesh	2802-00467
3	Coolant Fitting Manifold	Not Available
4	DI-Ionization Filter	072835
5	Water Flow Switch	2802-00483
6	DI / Temperature Sensor	198705
7	2-Position Water Level Switch	2802-00475
8	Bi-Metal Thermostat	108282
9	Pump, 230VAC, 1-HP	234891
10	Solenoid Valve, 24VAC, 1/2"	235138
11	Water-to-Water Heat Exchanger	226894



Control Panel

Parts List / Figure 1-6 (see below)

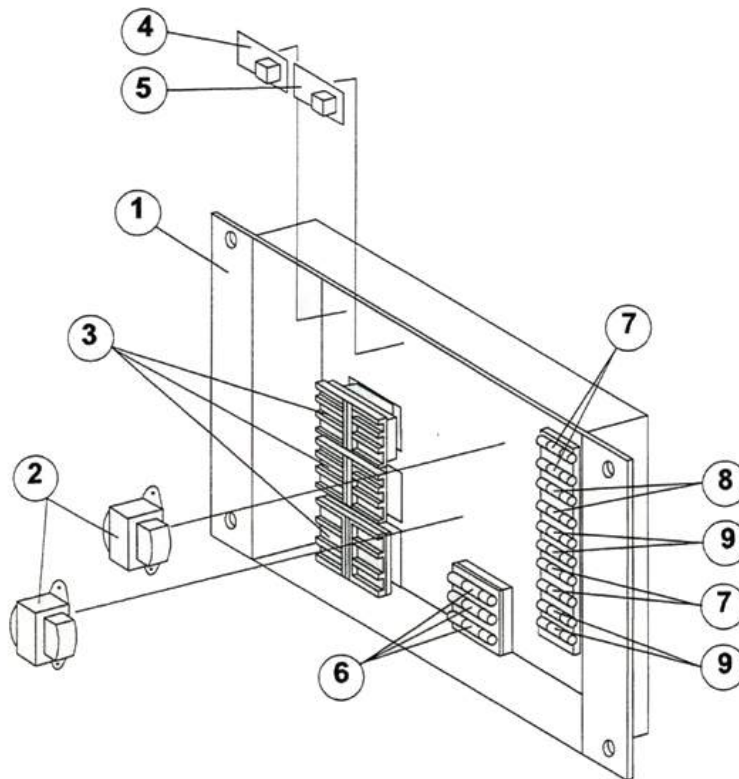
Item #	Description	Part #
1	Control Panel Bezel	Not Available
2	3-Position Key Switch	230092
3	E-Stop Actuator "A"	228240
	E-Stop Contact Block "B"	228236
4	6-Chip LED Indicator Lamp	227380
5	Amber Lens Cap	225532
6	Lamp Holder, Sub Mini	2205-02025
7	Actuator Switch (Shutter)	202143
8	2-Position Rocker Switch	202135
9	Diode Control PCB Assembly	Not Available



Power Distribution

Parts List / Figure 1-7 (see below)

Item #	Description	Part #
	Power Distribution Assembly	*Obsolete
1	Power Distribution Chassis	Not Available
2	230V / 24V Transformer	227300
3	24VAC Relay	200360
	SPST, N.O., 24VAC Relay	227766
4	Time Delay Relay (K5)	200352
5	Time Delay Relay (K3)	209916
6	20-Amp Fuse	139519
7	2-Amp Fuse	142984
8	Fuse, 3AG	227284
	Fuse, 3AG, 1.5A, 250V	227282
	Fuse, 3AG, .5A, 250V	227280
9	8-Amp Fuse	155143



Computer Chassis (rear)
Parts List / Figure 1-8

Item #	Description	Part #
	Computer Assembly, Front	*Requires System Upgrade
1	Computer Chassis	*Requires System Upgrade
2(A)	Pentium III, Baby AT Industrial Motherboard	235006
3(A)	Serial / Parallel Ports	Included w/ Motherboard
4	PCB Assembly, EPROM External Memory	*Requires System Upgrade
(A)	Memory, 512MB	Included w/ Motherboard
5(A)	PCB Assembly, Parallel I/O	*Requires System Upgrade
6(A)	PCB Assembly, A/D-I/O	*Requires System Upgrade
(A)	Cable Assembly, Hard Drive (IDE)	Included w/ Motherboard
(A)	Hard Drive, IDE, Multi-Gig	234555

Computer Chassis (front)
Parts List / Figure 1-9

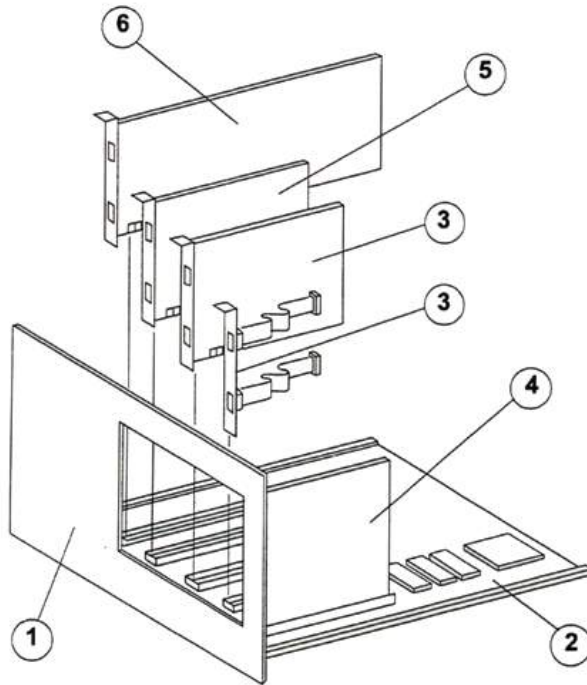
Item #	Description	Part #
	Computer Assembly, Front	*Requires System Upgrade
1	Computer Chassis	*Requires System Upgrade
2(A)	Pentium III, Baby AT Industrial Motherboard	235006
3	PCB Assembly, EPROM External Memory	*Requires System Upgrade
	Memory, 512MB	Included w/ Motherboard
4(A)	Serial / Parallel Ports	Included w/ Motherboard
5(A)	PCB Assembly, Parallel I/O	*Requires System Upgrade
(A)	PCI, Video Card Adaptor	235055
(A)	Cable Assembly, Hard Drive (IDE)	Included w/ Motherboard
(A)	Hard Drive, IDE, Multi-Gig	234555

* Repair / Parts Available
Full Computer upgrade available in addition to repair

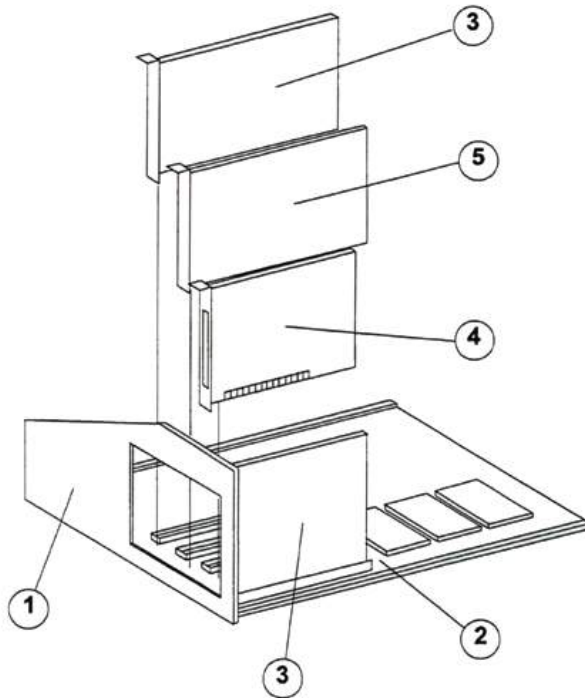
(A) Only available for customers with Win95 & Signature Graphics Plus software. Motherboard only sold as part of upgrade to full computer system or to current users of same industrial motherboard. Contact Customer Service Rep. for more information.

DOS & Windows 3.11 can no longer be supported and require full upgrade.

Computer Chassis (rear)
Figure 1-8



Computer Chassis (front)
Figure 1-9

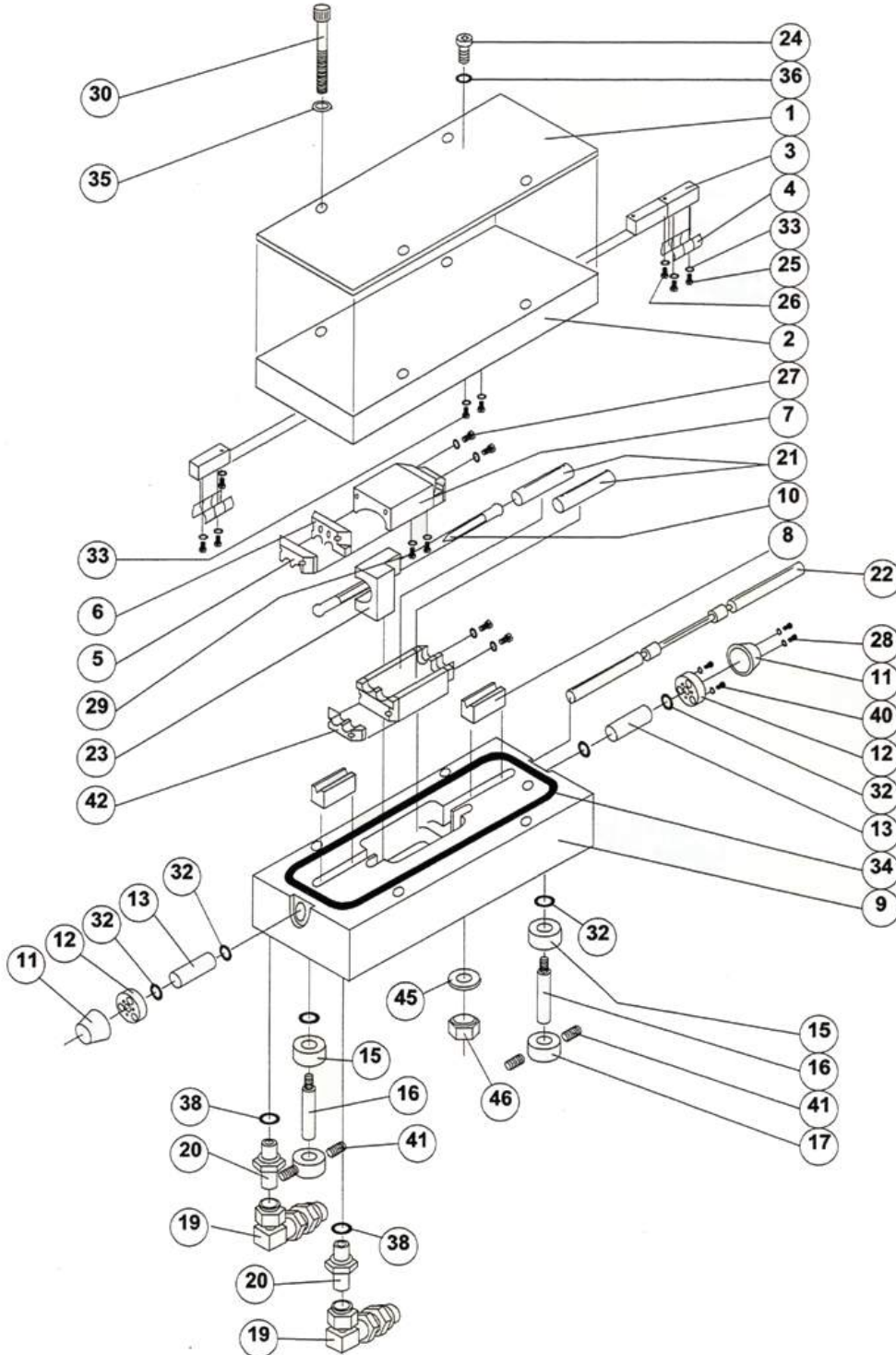


Laser Head Assembly (50 & 75 Watt)
Parts List / Figure 2-1

Item #	Description	Part #	Qty Used
see note	Head Assembly, 50W & 75W	0206-03472	1
1	512-Plus, Head Trim	198804	1
2	512-Plus, Head Top	198812	1
3	512-Plus, Lamp Clamp	198721	3
4	Lamp Retaining Clip	163444	2
5	Cavity Light Shield	198796	2
6	Gold Cavity End Plate	012781	4
7	Cavity Ellipse	012856	2
8	512-Plus, Lamp V-Block	215327	2
9	512-Plus, Head Housing	198820	1
10*	CW Krypton Arc Lamp	195180	1
11	Dust Shield	028928	2
12	Crystal Ring Clamp	027862	2
13	Crystal, Tube Assembly Guide	032391	2
15	Insulating Spacer	030452	2
16	512-Plus, Lamp Connector	198762	2
17	512-Plus, Insulating Cap	198887	2
19	1/2" x 1/2" Elbow Union	069377	2
20	Straight Threaded Adaptor	006049	2
21*	50W , Lamp & Rod Flow Tube (clear)	032433	2
21*	75W , Lamp Flow Tube (frosted)	226969	1
21*	75W , YAG Rod Flow Tube (doped)	226860	1
22	YAG Rod Assembly	039792	1
23	512-Plus Lamp Lifter	198747	1
24	Miscellaneous Screws	2407-00296	4
25	Miscellaneous Screws	2405-00507	4
26	Miscellaneous Screws	2405-00043	3
27	Miscellaneous Screws	2405-00698	16
28	Miscellaneous Screws	2405-00736	6
29	Miscellaneous Screws	2401-01045	2
30	Miscellaneous Screws	2405-00744	4
32	O-Ring	083998	6
33	O-Ring	084467	4
34	O-Ring	085258	1
35	Miscellaneous Washers	131037	4
36	Miscellaneous Washers	2403-00291	4
38	O-Ring	225573	2
40	Miscellaneous Screws	2405-00027	6
41	Miscellaneous Washers	110973	4
42	Lower Light Shield Cavity	012823	2
45	Washer	2403-00569	4
46	Nylon Nut	2404-00589	4
	100W , Krypton Arc Lamp	211185	1

* Denotes parts not included in purchase of Head Assembly

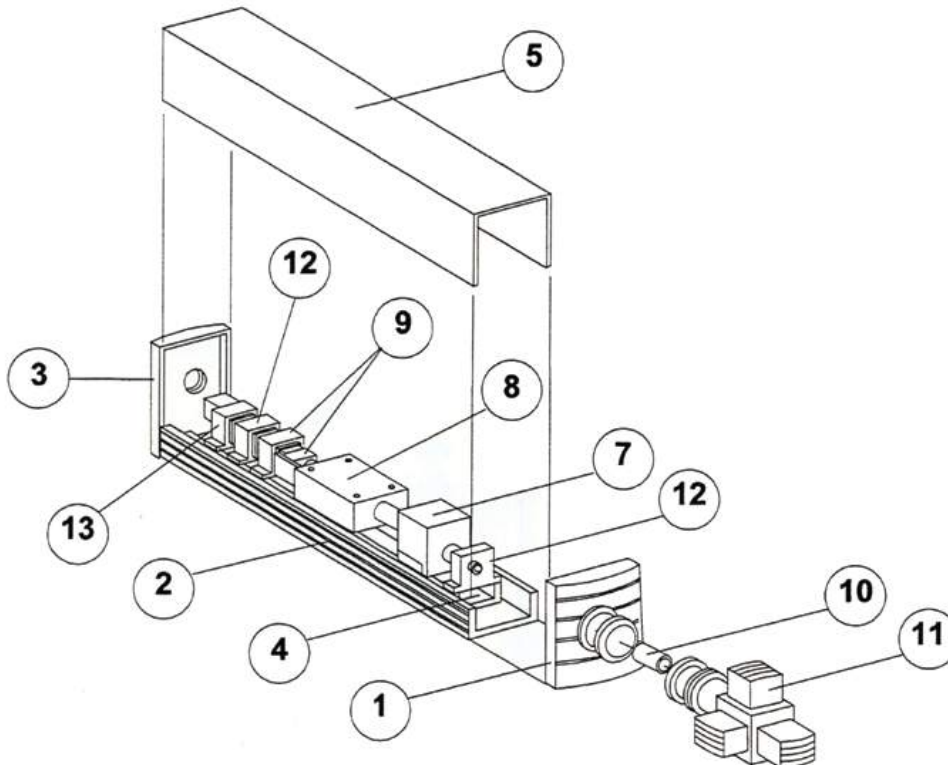
Laser Head Assembly (50 & 75 Watt)
Parts List / Figure 2-1



Laser Head and Rail Assembly
 Parts List / Figure 2-2 (see below)

Item #	Description	Part #
1	Rail, Front End Plate	Not Available
2	Rail Base Extrusion (outer)	Not Available
3	Rail, Rear End Plate	Not Available
4	Rail Extrusion (inner)	Not Available
5	Rail Cover	Not Available
7	Shutter / Aperture Assembly (#) Fixed Aperture Kit	
8	Signature / Script Head Assembly, 50W & 75W (#)	0206-03464
9	Mirror MT/Q-SW Common Assembly	0206-03391
10	Focal Input / Output Lens (#)	
11	Galvo / Scanner Assembly (#)	
12	Mirror Mount Assembly	0206-04207
13	Photo-Diode Assembly	0206-04096

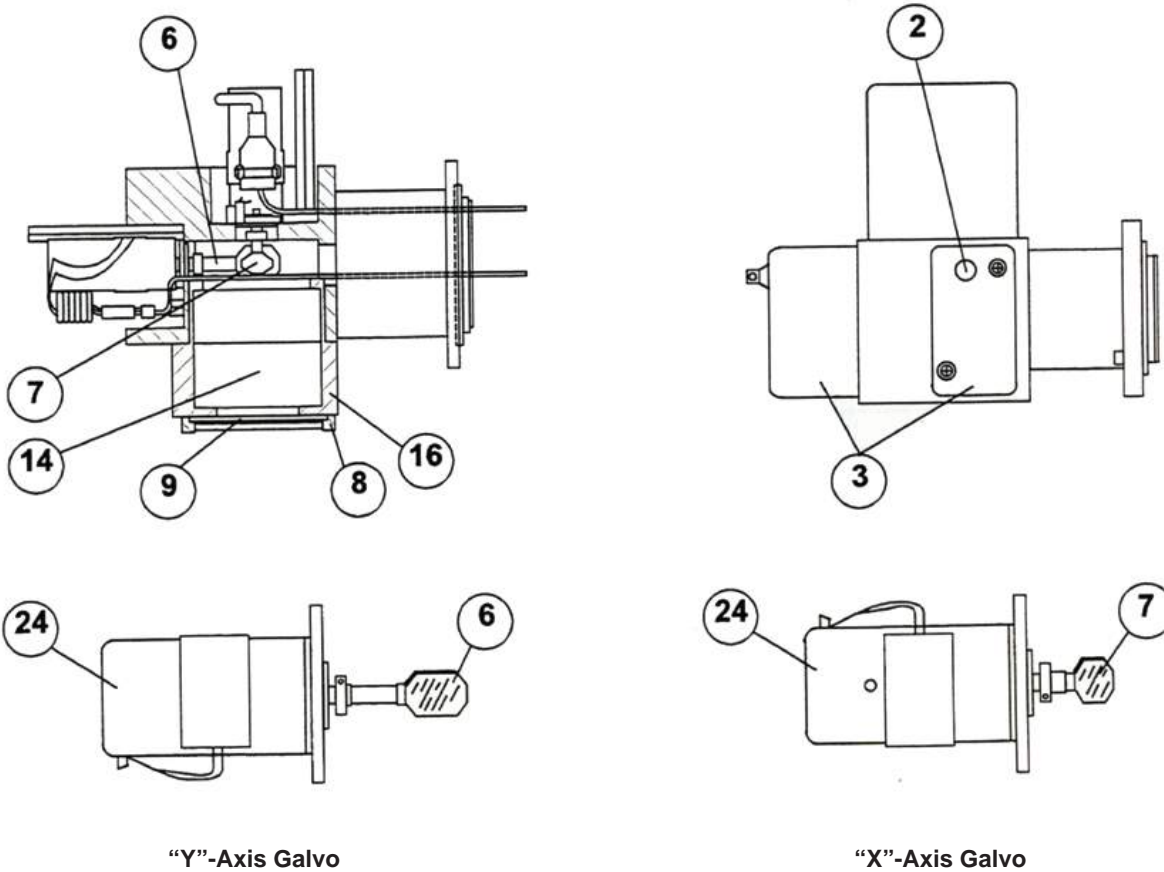
* Repair / Parts Available
 The (#) symbol denotes further component breakdown of this item.



Galvo / Scanner Assembly (old)
 Parts List / Figure 3-1 (see below)

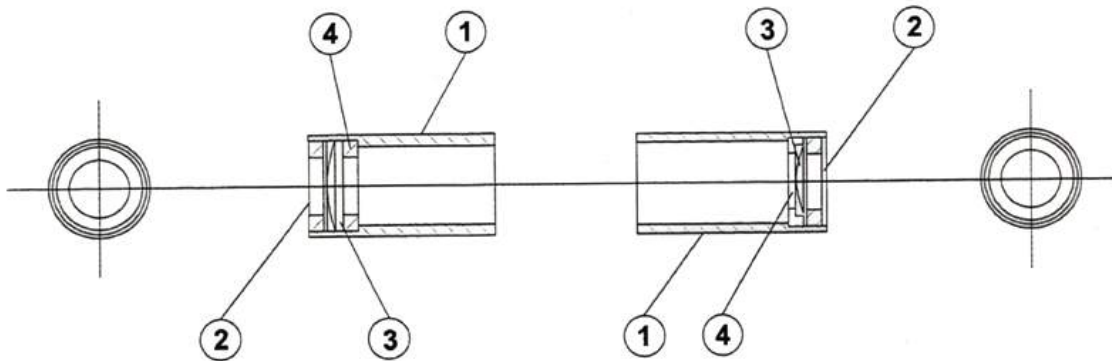
Item #	Description	Part #
	Optics Scanner Kit, 3" (100mm) marking field	* Requires System Upgrade
	Optics Scanner Kit, 5" (200mm) marking field	* Requires System Upgrade
	Optics Scanner Kit, 4" x 4" (200mm) marking field	* Requires System Upgrade
6(A)	Y-Axis Paddle Assembly	* Requires System Upgrade
7(A)	X-Axis Paddle Assembly	* Requires System Upgrade
9	Protective Window / Lens Shield	038885
24(A)	Galvo Motor	* Requires System Upgrade

(A) Included as part of system upgrade.
 Please consult Customer Service Rep. for more information.



Focal Input / Output Lens Assembly
 Parts List / Figure 3-3 (see below)

Item #	Description	Part #
INPUT	3.75X , Focal Input Lens Assembly	211433
	5X , Focal Input Lens Assembly	226084
	7.5X , Focal Input Lens Assembly	226340
1	Lens Holder (5X & 7X)	226068
1	Lens Holder (3.75X)	161844
2	Lens Retainer	162768
3	3.75X , BI-CONCAVE Lens	089318
3	5X , BI-CONCAVE Lens	226050
3	7.5X , BI-CONCAVE Lens	226456
4	Inside Lens Retainer (3.75X)	211425
4	Inside Lens Retainer (5X & 7.5X)	226076
OUTPUT	Focal Output Lens Assembly	041194
1	Lens Holder	161844
2	Lens Retainer	162768
3	Lens, PL-CVX, 22.3X 150FL CTD	037168
4	Lens Spacer	1401-05133



Focal Output Lens #041194

Focal Input Lens (refer to table above)

Signature - Script

SPARE PARTS CATALOG

Spare Parts Kit
Parts List

Part #	Description	50 Watt	50 Watt	75 Watt	75 Watt
		Signature	Script	Signature	Script
		0210-03215	0210-03215	0210-03215	0210-03215
		QTY	QTY	QTY	QTY
195180	512 Lamp	4	4	4	4
032433	Lamp Flow Tube, Clear	4	4	N/A	N/A
226860	Rod Flow Tube, Doped	N/A	N/A	2	2
226969	Lamp Flow Tube, Frosted	N/A	N/A	2	2
072835	DI Cartridge	2	2	2	2
090209	Rear Mirror (99.98%)	2	2	2	2
090290	Front Mirror (90%)	2	2	2	2
085258	Red O-Ring	1	1	1	1
227380	6-Chip LED Indicator Lamp	2	2	2	2
2204-00843	30A, Fuse	3	N/A	3	N/A
066977	40A, Fuse	N/A	2	N/A	2
142984	2A, Fuse	4	4	4	4
2204-00738	5A, Fuse	2	2	2	2
155143	8A, Fuse	4	4	4	4
163444	Lamp Clip	4	4	4	4
215327	Lamp V-Block	2	2	2	2
2802-00467	Mesh Filter	2	2	2	2

Arc Lamp Maintenance Kit



A Complete Kit with the essentials to maintain and protect your lamp-pump laser investment. Designed and tested to ensure the best performance and longevity from your Krypton Arc Lamp.

Guaranteed to increase lamp life and protect your laser system from costly lamp explosions!

HIGHLIGHTS

A complete set of DI water test and measurement devices in one convenient kit including:

- High flow T-Strainer assembly with clear polypropylene bowl, stainless steel mesh, integrated pressure test point and temperature indicator strip.
- Digital rate / flow meter with LCD readout. 1 - 10 GPM / 150 psig. PVC Housing. Powered by lithium batteries for approx 9,000 hours of operation.
- "Dip-Style" Water conductivity tester w/ easy to read digital display. 0 to 200.0, 0 to 2000 μ S; 0 to 20.00 mS. Valox® housing and stainless steel electrodes for good chemical compatibility. Built in water temperature indicator.
- Pressure measuring device.
- Hose Clamps w/ 1/2" barb fittings.

BENEFITS

Lack of water flow and high water temperatures are key contributors in lamp degradation and lamp failure. These conditions can cause high voltage arc lamps to fail prematurely resulting in harmful glass particles being pulled into the laser cooling system. This kit comes with everything you need to measure the critical aspects in maintaining laser arc lamp performance and protecting the laser system from harmful lamp explosions. Additionally, the Laser Arc Lamp Maintenance Kit comes with all the tools needed to measure water purity, which is also a key component in ensuring lamp ignition and proper laser performance. Easy to read displays allow for quick and accurate readings of flow and temperature while the stainless steel particle filter captures any harmful particles without causing any water flow restrictions.

Optical Cleaning Kit



A Complete Kit filled with the essentials for Laser Optic and General Lens cleaning and maintenance to ensure the best performance from your optical components.

HIGHLIGHTS

A complete set of supplies in one convenient cleaning kit including:

- Specially formulated "Laser Optic Cleaning Solution", which will not harm optical coatings or leave any residue.
- 100 Optical Cleaning Swabs
- 30 Latex anti-static finger cots
- 5 Booklets of lint-free Lens Cleaning Tissue
- Optical Blower Bulb
- Bausch & Lomb 10x Inspection Loupe

APPLICATIONS

Ideal solution to clean and maintain optical components in pristine condition. For use on a variety of laser optics, lenses, mirrors, and optical instruments.

KEY FEATURES

- Scientifically formulated cleaning agent specifically designed for optics, lenses, and optical instruments.
- Cleans without trace residues.
- Removes all common contaminants.
- Will not harm standard optical coatings.

Master Maintenance Kit



Improve your laser's performance, reliability, and reduce down time. Keep your laser running at peak efficiency with Control Laser's full range of analytic and diagnostic equipment. The Master Maintenance Kit has all the diagnostic tools needed to analyze problems and increase the effectiveness of your preventative maintenance program. Keep your laser running like new with the Master Maintenance Kit.

Guaranteed to lower operating / maintenance costs by maintaining the laser's peak performance.

KIT CONTAINS

- RF Meter w/ Female BNC Connector
- 100-Watt Power Detector w/ Heat Sink & 3' Coax Cable
- Digital Flow Meter
- Infrared Hand Viewer
- 60-Watt Dummy Load w/ Coax Connector
- One Pair Laser Safety Glasses
- Water Conductivity Kit
- Aluminum carrying case with Custom Foam inserts

Signature - Script

To Order Parts Contact: 1(866) 612-8619 / Fax: (407) 926-3551
or Visit Our Website: www.controllaser.com



Control Laser Corporation
2419 Lake Orange Drive, Orlando, FL 32837
Main Line: (407) 926-3500 / Main Fax: (407) 926-3590
www.controllaser.com

© 2009 Copyright, Control Laser Corporation, All Rights Reserved.